



www.watlinglower.org.uk

NEWSLETTER NO. 12

Date: June 2008

Ref: News 12 June 08

Dear Parents,

Dates for your Diary

Tues 17th – Mon 23rd June

Tuesday 24th June

Friday 27th June

Wednesday 25th June

Wednesday 25th June

Wednesday 2nd July

Thursday 3rd July

Wednesday 9th July

Thursday 10th July

Book Fair

Key Stage 1 & 2 trip to Ashridge – Elm & chestnut Class

Key Stage 1 & 2 trip to Ashridge – Holly & Rowan Class

Image Theatre performance of “Jungle Book” to whole school

2-3pm 4+ New Intake Induction afternoon for September 2008 intake

Middle School Transfer Day for year 4 pupils

9.30-11 and 2-3pm – 2009 Prospective Parents/Children Open Day visit to school

7pm Key Stage 2 concert

2pm and 7pm Key Stage 2 concert

School Term Dates:

Monday 26th May

Monday 30th June

Friday 18th July

Tuesday 2nd September

Half term week begins

School Closure Day – Staff Training Day

Break up for the summer holidays

Return to school for Autumn Term

Sports Day

We are still not having any luck with a suitable day for sports day, as we have been ‘rained-off’ twice now. Hopefully we can pick a day during week commencing 23rd June. We will keep an eye on the weather forecasts, and try and give you as much notice as practically possible. Thank you all for your patience.

Active Schools Vouchers

The above scheme has now finished, but if you have any vouchers still at home, please bring them into school by the end of next week, as Mrs. Young will be posting them off to Sainsbury’s. Thank you.

School visits: Please note that anyone who is ordering a “Free Packed Lunch” MUST provide their child with a drink, as the Catering Company are no longer supplying this. Thank you.

Open Day for 2009

Please tell anyone who is interested in a place for their child in September 2009 that our Open Day will be on 3rd July 2008. The 4+ unit will be open to visitors from 9.30 – 11.00 am and 2.00 – 3.00 pm. If you are unable to join us on this occasion, you are welcome to telephone the school to arrange an alternative time to visit the school. Applications for 2009 need to be received by the school during the first two weeks in September 2008.

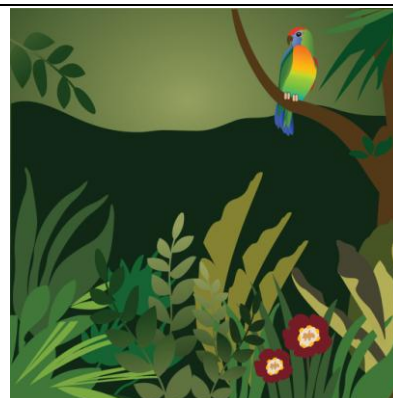


Image Theatre – Jungle Book

Lost Property

We have found a small black 'Your M & S' lunch box in school which has some contact lense drop dispenser in it. If it is yours, please collect it from the school office.

Ian Black
Headteacher

If you require this newsletter in alternative formats or larger print, please contact the office.